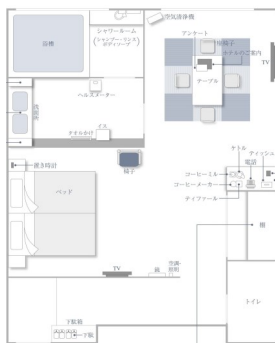
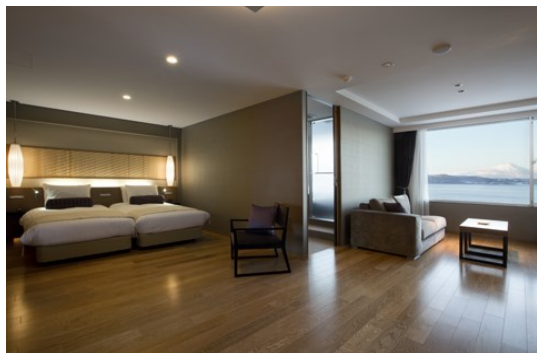


From to
Chitose Airport

「Dedicated Vehicle & Excellent Hotel」 Plan for Wealthy class!
【Touyako/Niseko/Otaru/Shakotan/Sapporo】 4nights 5days

< ex. : Accommodation >



Toyako ONSEN Nonokaze Resort with Observation bath in the Room

Guest room Layout

Ex:Tour price (4night 5days),In case of Select Hotels as below
Price Rate is Calculated based on 16th/Nov/2015 departure

	Price/person (2persons in 1room) 295,000JPY/person
Day 1	Toya Nonokaze resort [Nonokaze-club]
Day 2	Unganoyado Furukawa [Special room]
Day 3	JR tower Hotel Nikkou Sapporo [Corner deluxe twin]
Day 4	JR tower Hotel Nikkou Sapporo [Corner deluxe twin]

Including : Hotel fee 4night 5days(4 breakfast,3 dinner)
Alphard with Refrigerator, Toll road/parking lot fee,
Driver's lodging expenses, Admission fee which Schedule of itinerary , tax

<Dedicated Vehicle : Alphard / Max.Passenger: 7 persons / To Provide Traction vehicle:In case of passenger is more than 5 persons

Provide Large size Vehicle [High Ace Grand Cabin] in case of Passenger is 8~9 persons .



We will refill Free beverage everyday!
Please drink Anytime!
<Contents>
White wine , Rose wine ,Mineral Water
Some Side dishes & Glasses



Alphard

Special Equipment : Refrigerator

Look of Traction Vehicle & Alphard

< Recommend Course >

※1: Private Open air bath in the Guest Room
※2: Observation bath in the Guest Room

Day	Itinerary	meal	Hotel Selection
1	10:00 Welcome you at New Chitose Air Port Arrival Lobby • Shirai Ainu minzoku Musium • Shouwa Shinzan • Kuma Bokujyou Look around Lake side 16:00 <Touyako ONSEN Stay>	B On board L _____ D Buffet	• TOYA Nonokaze Resort [Nonokaze club]※2 • The Windsor Hotel
2	8:30 • Kyogoku fukidashi kouen(Groundwater of Mt.Yotei will squirt) • Look aroud peninsula Kamui & Shakotan • Otaru VIP House • Otaru Canal • Look aroud Sakaimachi doori 16:30 <Otaru Stay >	B Hotel L _____ D Kaiseki	• Ungano-yado Furukawa ※2 [Special room] • Ryoutei Ryokan Ginrinsou(Nishin Goten)
3	900 • Head to Sapporo~ • Ookurayama • Akarenga 13:00 ~ Free schedule! 16:00 <Sapporo Stay >	B Hotel L _____ D Sukiyaki	• Park Hotel [Park in Park/50㎡ over] • JR Tower Hotel Nikkou Sapporo [Corner deluxe twin]
4	All day long free schedule! <Sapporo Stay >	B Hotel L _____ D _____	• Park Hotel [Park in Park/50㎡ over] • JR Tower Hotel Nikkou Sapporo [Corner deluxe twin]
5	7:30 After breakfast send to Airport 8:30 New Chitose Airport Extend Stay OK!	B Hotel L On board	

Remark: Course will be Arrangement by your Requirement

contact global@sapporo-concierge.com
URL <http://www.sapporo-concierge.com>